

(CEP) Commercial Enhancement Program

CEP Properties

DATE Commercial Properties Exceeding + 50,000 sqft.

CEDAR

BEECH

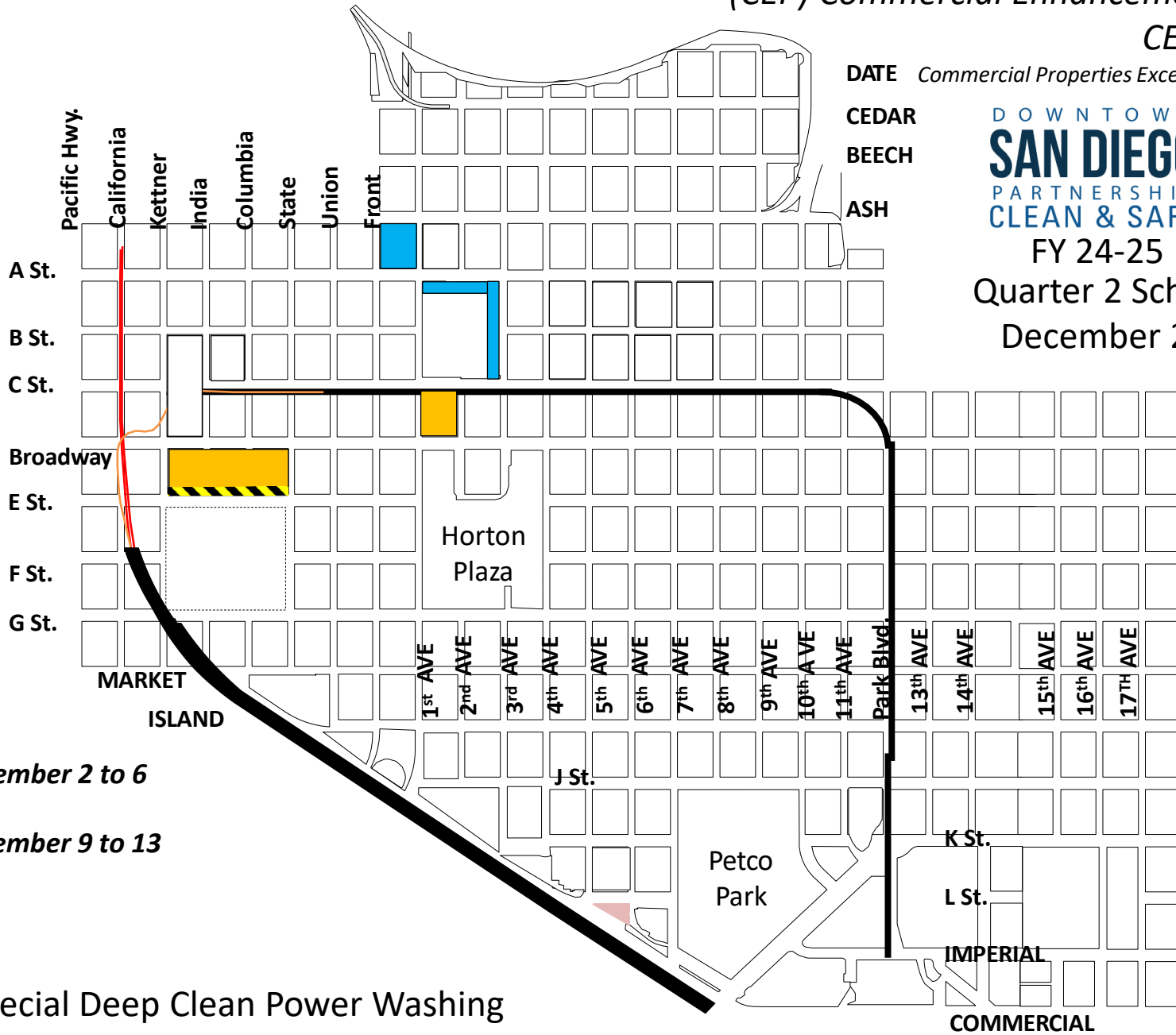
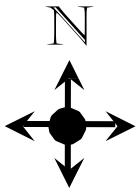
ASH



FY 24-25

Quarter 2 Schedule

December 2024



 December 2 to 6

 December 9 to 13

Special Deep Clean Power Washing

As of 12/02/24