



Downtown San Diego Business Improvement District

October 21, 2015 2:30 p.m.

401 B Street, Suite 100, San Diego, CA 92101

Welcome

- Welcome and Introduction
- Non Agenda Public Comment
- Next Board Meeting: 1.20.2015

Overview

- BID Overview & Objectives (Page 2)

Staff Report

- Past & Current Projects
- Upcoming Projects

Financial Report

- Review & Accept July - September 2015 Financials (Pages 3-4) Action

Member Discussion

- Member Discussion

Adjourn



THIS INFORMATION IS AVAILABLE IN ALTERNATIVE FORMATS UPON REQUEST. To request an alternative format or to request a sign language or oral interpreter for the meeting, please contact the Clean & Safe Program office at least five (5) working days before the meeting at (619) 234-8900 to ensure availability. Assistive Listening Devices (ALDs) are available for the meeting upon advanced request.

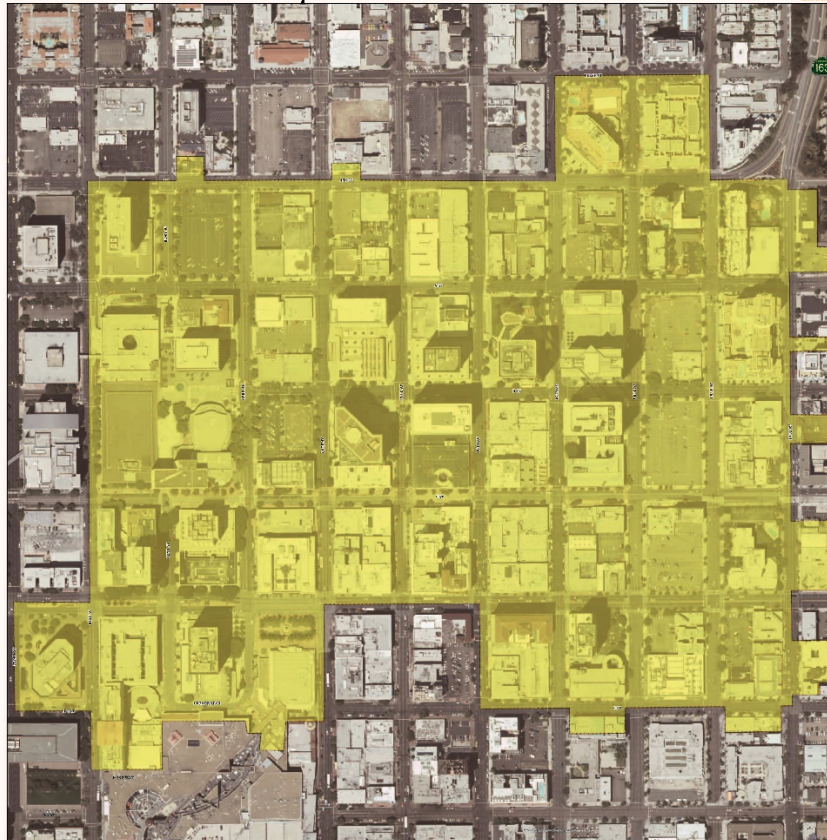


Downtown San Diego Business Improvement District

Overview & Objectives

- *Establish objectives for evaluating & strengthening existing businesses*
- *Explore methods of attracting new businesses*
- *Develop general promotional strategy*
- *Connect with agencies conducting business revitalization activities*
- *Support public improvement projects*
- *Manage banner district*

Downtown Business Improvement District



San Diego's Business Improvement Districts (BIDs) are City-designated geographic-based areas where the business owners are assessed annually to fund activities and improvements to promote the business district. The City of San Diego supports BIDs as a tool for strengthening small business communities, creating new jobs, attracting new businesses, and revitalizing older commercial neighborhoods across the city. The City partners with merchants associations, representing the assessed business owners, to implement the BID program.

For more information about Business Improvement Districts, visit:
<http://www.sandiego.gov/economic-development/about/bids.html>

District boundaries are for illustration purposes.

Prepared and Published by The City of San Diego on Date: 7/5/2016



Map Key

- ◊ Parcels
- ◆ BID Boundaries

SAN GIS

THIS MAP IS A PRODUCT OF THE CITY OF SAN DIEGO'S GIS DEPARTMENT. IT IS PROVIDED AS-IS AND WITHOUT WARRANTY. THE CITY OF SAN DIEGO IS NOT RESPONSIBLE FOR ANY ERRORS OR OMISSIONS. THE USER ASSUMES ALL LIABILITY FOR ANY USE OF THIS MAP. THE CITY OF SAN DIEGO IS NOT RESPONSIBLE FOR ANY DAMAGES, INCLUDING CONSEQUENTIAL DAMAGES, ARISING FROM THE USE OF THIS MAP. THE CITY OF SAN DIEGO IS NOT RESPONSIBLE FOR ANY DAMAGES, INCLUDING CONSEQUENTIAL DAMAGES, ARISING FROM THE USE OF THIS MAP.

This map is prepared by SAN GIS at the City of San Diego. It is a product of the City of San Diego's GIS Department. It is provided as-is and without warranty. The City of San Diego is not responsible for any errors or omissions. The user assumes all liability for any use of this map. The City of San Diego is not responsible for any damages, including consequential damages, arising from the use of this map.

Copyright 2016 City of San Diego. All rights reserved. All other trademarks are the property of their respective owners.

Downtown BID
Profit & Loss
July through September 2015

	<u>Jul - Sep 15</u>
Income	
BID Income	
40001 · BID Assessments	17,220.36
40002 · SBEP	2,902.64
Total BID Income	<u>20,123.00</u>
Total Income	<u>20,123.00</u>
Gross Profit	20,123.00
Expense	
Operating	
50050 · Rent	4,384.24
50055 · Phone	165.24
50065 · Copier Lease	221.32
50066 · Office Telephone Lease	64.15
50067 · Office Water	67.10
50068 · Office Plant Maintenance	26.68
50069 · Office Internet	71.27
50075 · Liability/D&O Insurance	2,690.00
50150 · Legal Expense	943.50
Total Operating	<u>8,633.50</u>
Personnel	
50001 · District Director	2,497.10
50002 · Director of Finance	5,711.40
Total Personnel	<u>8,208.50</u>
Special Events	<u>3,281.00</u>
Total Expense	<u>20,123.00</u>
Net Income	<u><u>0.00</u></u>

Downtown BID
Balance Sheet
As of September 30, 2015

	<u>Sep 30, 15</u>
ASSETS	
Current Assets	
Checking/Savings	
1800 · BID Checking Account	31,415.18
Total Checking/Savings	<u>31,415.18</u>
Total Current Assets	<u>31,415.18</u>
TOTAL ASSETS	<u><u>31,415.18</u></u>
LIABILITIES & EQUITY	
Liabilities	
Current Liabilities	
Accounts Payable	
20000 · Accounts Payable	2,500.00
Total Accounts Payable	<u>2,500.00</u>
Other Current Liabilities	
20205 · BID Assessments	-7,659.31
20206 · SBEP Income	17,185.36
Total Other Current Liabilities	<u>9,526.05</u>
Total Current Liabilities	<u>12,026.05</u>
Total Liabilities	12,026.05
Equity	
32000 · Unrestricted Net Assets	19,389.13
Total Equity	<u>19,389.13</u>
TOTAL LIABILITIES & EQUITY	<u><u>31,415.18</u></u>